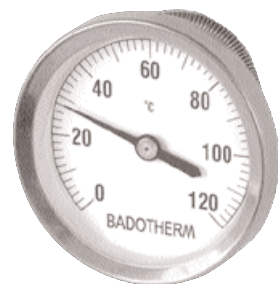


Badotherm bimetal model BDTS and BDTM series thermometer are available as 63 mm. These versatile clip-on and magnet thermometers are suitable for heating, piping and ventilating systems (HVAC systems). BDTM is with magnet to connect to a steel surface. BDTS is with a mounting spring to connect against a pipe to measure the surface temperature.



BDTS

spring and magnetic bimetal thermometer

mounting variations

- type BDTS with spring connection
- type BDTM with magnetic connection
- type D back connection, direct mounting
- type E panel mounting, back connection
- type F panel mounting, bottom connection
- type BDTE every angle connection, direct mounting

technical specification model BDTS

diameter	dial	window	ranges
63 mm	aluminium	glass	from 0-60 and 120 °C
casing	stem	element	connection
steel	flat	spiral bimetal	pipe mounting
bezel	stem dia	pointer	accuracy
nickel plated	spring	fixed	2.5% FSD

Note: pipe mounting springs are available for different diameters of pipe

options and special executions at extra costs

BDTS ranges	available up to 200 °C
BDTM ranges	available up to 400 °C
window	glass
dials	customized -i.e., non standard ranges or logos
certificates	calibration-; conformity-; material
manuals	installation and maintenance
connection	NPT, MM, BSPT, acc JIS in various sizes
connection type	fixed or without connection
red pointer	on dial

BDTS - technical data sheet

operating details

working range

	limitations
Permanent	measuring range per DIN 13 190
Short time (≤ 1 h)	1,1 x measuring range

temperature limitations

	ambient	process
without filling	-40 °C to 60 °C	0 °C to 120 °C

design information

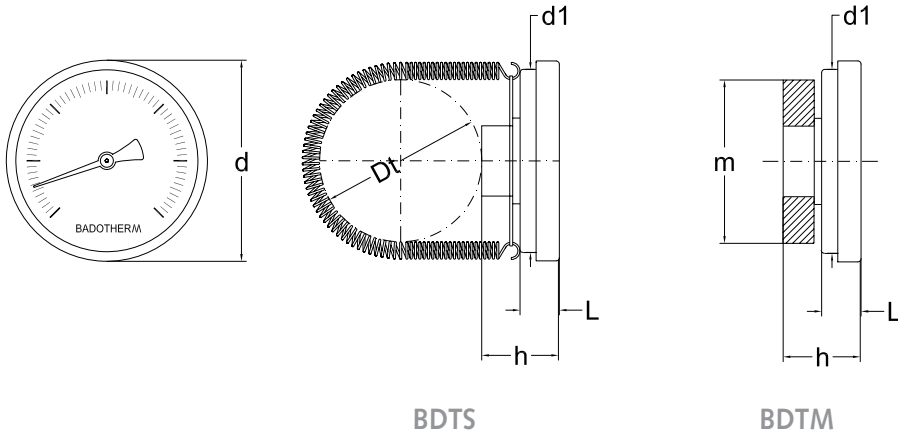
ingress protection

IP 54 per EN 60 529 / IEC 529

design

DIN 13 190

drawings



BDTS

BDTM

dimensions

ns	d	d1	L	h	Dt	m	-
63	64	62,5	17,5	30,5	1...2"	34	-

Note : dimensions are in mm

stainless steel bimetal thermometer minimum immersion lengths

range °C	span °C	min. immersion length (mm)
-20 + 40	60	100
-20 + 50	70	80
-20 + 60	80	63
-20 + 80	100	63
-20 + 100	120	63
-20 + 110	130	63
-20 + 120	140	50
-20 + 140	160	63
-25 + 40	65	80
-30 + 50	80	63
-30 + 70	100	80
-30 + 100	130	63
-40 + 60	100	80
-40 + 120	160	63
-50 + 50	100	80
-50 + 550	600	100
0 + 60	60	80
0 + 80	80	100
0 + 100	100	63
0 + 120	120	50
0 + 150	150	50
0 + 160	160	50
0 + 200	200	50
0 + 250	250	100
0 + 300	300	100
0 + 350	350	100
0 + 400	400	100
0 + 450	450	100
0 + 500	500	100
0 + 550	550	100

