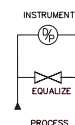
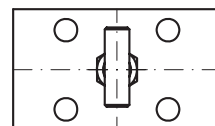
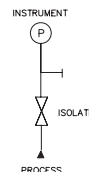
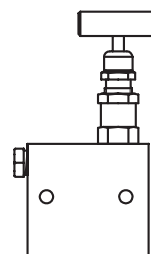


| Model | Inlet (process) | Outlet (instrument) |
|--------------------------------|----------------------|-----------------------|
| With HS stem | Horizontal | Backside |
| M1H | 1/2" NPT female (2x) | Flanged DIN19213 (2x) |
| Standard specifications | | |
| Pressure | 420 bar | |
| Vent/test connection | Not | |
| Venting bonnet | Not | |
| Isolating bonnet | Not | |
| Equalizing bonnet | At front side | |
| Bracket holes | Not | |


M1H

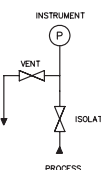
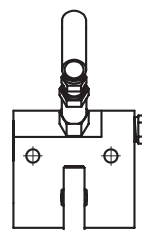
- Options: ■ materials such as Monel, Duplex, steel available on request
 ■ stem type SO
 ■ up to 700 bar

| Model | Inlet (process) | Outlet (instrument) |
|--------------------------------|------------------------|-----------------------|
| With HS stem | Horizontal left side | Horizontal right side |
| M1V | 1/2" NPT female (1x) | 1/2" NPT female (1x) |
| Standard specifications | | |
| Pressure | 420 bar | |
| Vent/test connection | At left side (plugged) | |
| Venting bonnet | Not | |
| Isolating bonnet | At top side | |
| Equalizing bonnet | Not | |
| Bracket holes | Yes | |


M1V

- Options: ■ materials such as Monel, Duplex, steel available on request
 ■ stem type SO
 ■ up to 700 bar

| Model | Inlet (process) | Outlet (instrument) |
|--------------------------------|-------------------------|-----------------------|
| With HS stem | Horizontal left side | Horizontal right side |
| M2A | 1/2" NPT female (1x) | 1/2" NPT female (1x) |
| Standard specifications | | |
| Pressure | 420 bar | |
| Vent/test connection | At right side (plugged) | |
| Venting bonnet | Angular at top side | |
| Isolating bonnet | At front side | |
| Equalizing bonnet | Not | |
| Bracket holes | Yes | |


M2A

- Options: ■ materials such as Monel, Duplex, steel available on request
 ■ stem type SO
 ■ up to 700 bar
 ■ anti tamper facility with removable key