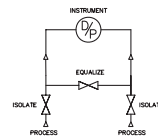
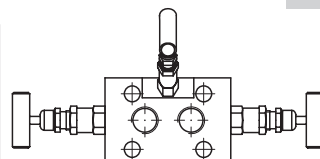


Model	Inlet (process)	Outlet (instrument)
With HS stem	Horizontal front side	Back side
<b>M3A</b>	1/2" NPT female (2x)	Flanged DIN19213 (2x)
<b>Standard specifications</b>		
Pressure	420 bar	
Vent/test connection	Not	
Venting bonnet	Not	
Isolating bonnet	At left and right side	
Equalizing bonnet	Angular at top side	
Bracket holes	Yes	

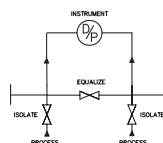
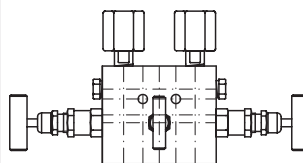
- Options: ■ materials such as Monel, Duplex, steel available on request  
 ■ stem type SO  
 ■ up to 700 bar  
 ■ anti tamper facility with removable key



**M3A**

Model	Inlet (process)	Outlet (instrument)
With HS stem	Bottom side	Top side
<b>M3D</b>	1/2" NPT female (2x)	1/2" BSP male rotating (2x)
<b>Standard specifications</b>		
Pressure	420 bar	
Vent/test connection	Not	
Venting bonnet	Not	
Isolating bonnet	At left and right side	
Equalizing bonnet	At front side	
Bracket holes	Yes	

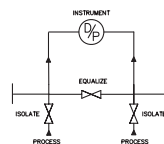
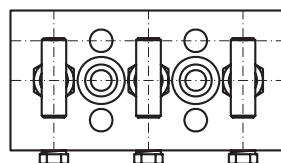
- Options: ■ materials such as Monel, Duplex, steel available on request  
 ■ stem type SO  
 ■ up to 700 bar  
 ■ anti tamper facility with removable key



**M3D**

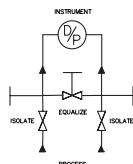
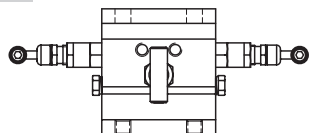
Model	Inlet (process)	Outlet (instrument)
With HS stem	Horizontal	Back side
<b>M3F</b>	1/2" NPT female (2x)	Flanged DIN19213 (2x)
<b>Standard specifications</b>		
Pressure	420 bar	
Vent/test connection	At bottom side	
Venting bonnet	Not	
Isolating bonnet	At front side	
Equalizing bonnet	At front side	
Bracket holes	Not	

- Options: ■ materials such as Monel, Duplex, steel available on request  
 ■ stem type SO  
 ■ up to 700 bar  
 ■ anti tamper facility with removable key



**M3F**

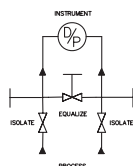
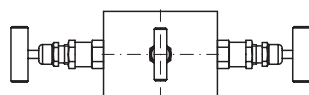
## instrument manifolds in AISI316

**M3H**

Model	Inlet (process)	Outlet (instrument)
With HS stem	Front side	Back side
<b>M3H</b>	Flanged DIN19213 (2x)	Flanged DIN19213 (2x)
Standard specifications		
Pressure	420 bar	
Vent/test connection	At left and right side	
Venting bonnet	Not	
Isolating bonnet	At left and right side	
Equalizing bonnet	At top side	
Bracket holes	Yes	

Options: ■ materials such as Monel, Duplex, steel available on request

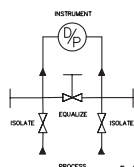
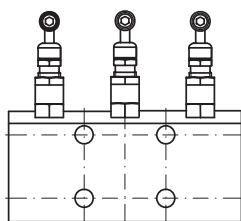
- stem type SO
- up to 700 bar
- anti tamper facility with removable key

**M3M**

Model	Inlet (process)	Outlet (instrument)
With HS stem	Bottom side	Top side
<b>M3M</b>	1/2" NPT female (2x)	1/2" NPT female (2x)
Standard specifications		
Pressure	420 bar	
Vent/test connection	Not	
Venting bonnet	Not	
Isolating bonnet	At left and right side	
Equalizing bonnet	At front side	
Bracket holes	Not	

Options: ■ materials such as Monel, Duplex, steel available on request

- stem type SO
- up to 700 bar
- anti tamper facility with removable key

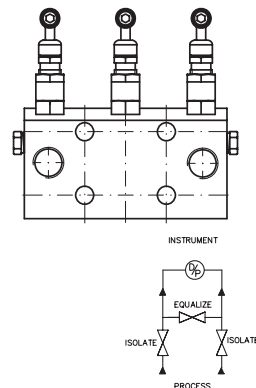
**M3O**

Model	Inlet (process)	Outlet (instrument)
With HS stem	Horizontal	Back side
<b>M3O</b>	1/2" NPT female (2x)	Flanged DIN19213 (2x)
Standard specifications		
Pressure	420 bar	
Vent/test connection	Not	
Venting bonnet	Not	
Isolating bonnet	Angular at top side	
Equalizing bonnet	Angular at top side	
Bracket holes	Yes	

Options: ■ materials such as Monel, Duplex, steel available on request

- stem type SO
- up to 700 bar
- anti tamper facility with removable key

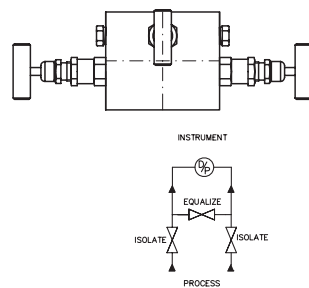
Model	Inlet (process)	Outlet (instrument)
With HS stem	Front side	Back side
<b>M3P</b>	1/2" NPT female (2x)	Flanged DIN19213 (2x)
<b>Standard specifications</b>		
Pressure	420 bar	
Vent/test connection	At left and right side	
Venting bonnet	Not	
Isolating bonnet	Angular at top side	
Equalizing bonnet	Angular at top side	
Bracket holes	Yes	


**M3P**

Options: ■ materials such as Monel, Duplex, steel available on request

- stem type SO
- up to 700 bar
- anti tamper facility with removable key

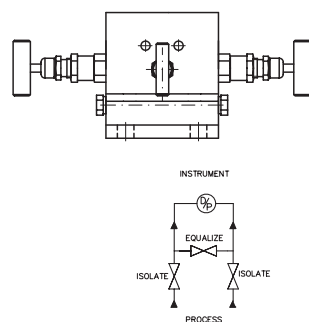
Model	Inlet (process)	Outlet (instrument)
With HS stem	Bottom side	Top side
<b>M3S</b>	1/2" NPT female (2x)	1/2" NPT female (2x)
<b>Standard specifications</b>		
Pressure	420 bar	
Vent/test connection	At left and right side	
Venting bonnet	Not	
Isolating bonnet	At left and right side	
Equalizing bonnet	At front side	
Bracket holes	Not	


**M3S**

Options: ■ materials such as Monel, Duplex, steel available on request

- stem type SO
- up to 700 bar
- anti tamper facility with removable key

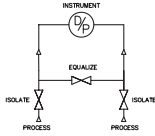
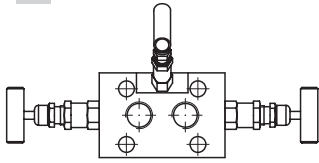
Model	Inlet (process)	Outlet (instrument)
With HS stem	Horizontal	Back side
<b>M3T</b>	1/2" NPT female (2x)	Flanged DIN19213 (2x)
<b>Standard specifications</b>		
Pressure	420 bar	
Vent/test connection	At left and right side	
Venting bonnet	Not	
Isolating bonnet	At left and right side	
Equalizing bonnet	At top side	
Bracket holes	Yes	


**M3T**

Options: ■ materials such as Monel, Duplex, steel available on request

- stem type SO
- up to 700 bar
- anti tamper facility with removable key

## instrument manifolds in AISI316



Model	Inlet (process)	Outlet (instrument)
With HS stem	Horizontal front side	Back side
<b>M3B</b>	Flanged DIN19213 (2x)	Flanged DIN19213 (2x)
Standard specifications		
Pressure	420 bar	
Vent/test connection	Not	
Venting bonnet	Not	
Isolating bonnet	At left and right side	
Equalizing bonnet	Angular at top side	
Bracket holes	Yes	

### M3B

Options: ■ materials such as Monel, Duplex, steel available on request

- stem type SO
- up to 700 bar
- anti tamper facility with removable key

