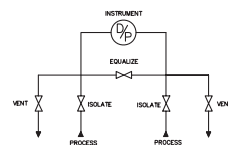
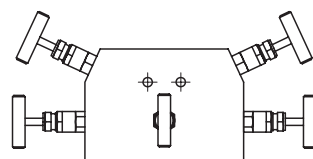


Model	Inlet (process)	Outlet (instrument)
With HS stem	Bottom side	Top side
<b>M5A</b>	1/2" NPT female (2x)	1/2" NPT female (2x)
<b>Standard specifications</b>		
Pressure	420 bar	
Vent/test connection	At back side	
Venting bonnet	At left and right side	
Isolating bonnet	At left and right side	
Equalizing bonnet	At front side	
Bracket holes	Yes	

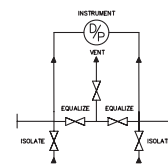
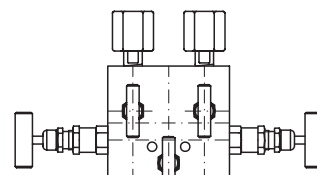


**M5A**

Options: ■ materials such as Monel, Duplex, steel available on request

- stem type SO
- up to 700 bar
- anti tamper facility with removable key

Model	Inlet (process)	Outlet (instrument)
With HS stem	Bottom side	Top side
<b>M5D</b>	1/2" NPT female (2x)	1/2" BSP female rotating (2x)
<b>Standard specifications</b>		
Pressure	420 bar	
Vent/test connection	At back side	
Venting bonnet	At front side	
Isolating bonnet	At left and right side	
Equalizing bonnet	At front side	
Bracket holes	Yes	

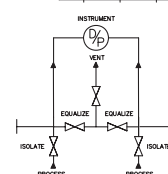
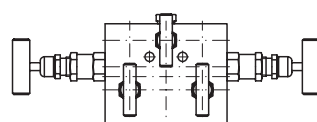


**M5D**

Options: ■ materials such as Monel, Duplex, steel available on request

- stem type SO
- up to 700 bar
- anti tamper facility with removable key

Model	Inlet (process)	Outlet (instrument)
With HS stem	Bottom side	Top side
<b>M5G</b>	1/2" NPT female (2x)	1/2" NPT female (2x)
<b>Standard specifications</b>		
Pressure	420 bar	
Vent/test connection	At top side	
Venting bonnet	At front side	
Isolating bonnet	At left and right side	
Equalizing bonnet	At front side	
Bracket holes	Yes	

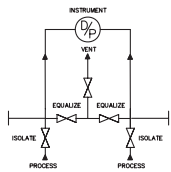
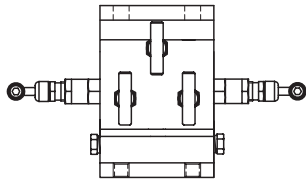


**M5G**

Options: ■ materials such as Monel, Duplex, steel available on request

- stem type SO
- up to 700 bar
- anti tamper facility with removable key

## instrument manifolds in AISI316

**M5H**

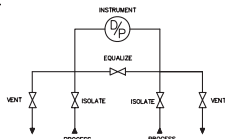
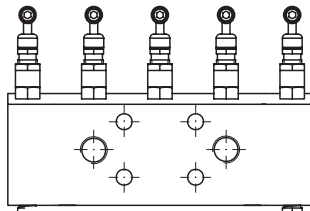
Model	Inlet (process)	Outlet (instrument)
With HS stem	Front side	Back side
<b>M5H</b>	Flanged DIN19213 (2x)	Flanged DIN19213 (2x)
Standard specifications		
Pressure	420 bar	
Vent/test connection	At left and right side	
Venting bonnet	At top side	
Isolating bonnet	At left and right side	
Equalizing bonnet	At top side	
Bracket holes	Yes	

Options: ■ materials such as Monel, Duplex, steel available on request

■ stem type SO

■ up to 700 bar

■ anti tamper facility with removable key

**M5P**

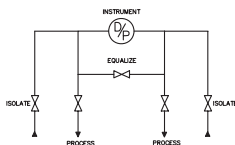
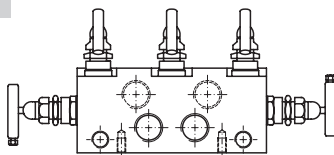
Model	Inlet (process)	Outlet (instrument)
With HS stem	Front side	Back side
<b>M5P</b>	1/2" NPT female (2x)	Flanged DIN19213 (2x)
Standard specifications		
Pressure	420 bar	
Vent/test connection	At bottom side	
Venting bonnet	Angular at top side	
Isolating bonnet	Angular at top side	
Equalizing bonnet	Angular at top side	
Bracket holes	Yes	

Options: ■ materials such as Monel, Duplex, steel available on request

■ stem type SO

■ up to 700 bar

■ anti tamper facility with removable key

**M5Q**

Model	Inlet (process)	Outlet (instrument)
With HS stem	Front side	Back side
<b>M5Q</b>	1/2" NPT female (2x)	1/2" NPT female (2x)
Standard specifications		
Pressure	420 bar	
Vent/test connection	At front side	
Venting bonnet	Angular at top side	
Isolating bonnet	At left and right side	
Equalizing bonnet	Angular at top side	
Bracket holes	Yes	

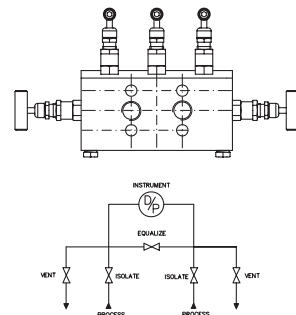
Options: ■ materials such as Monel, Duplex, steel available on request

■ stem type SO

■ up to 700 bar

■ anti tamper facility with removable key

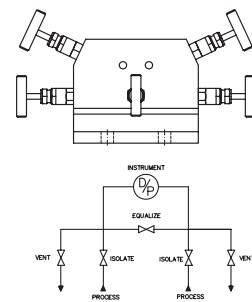
Model	Inlet (process)	Outlet (instrument)
With HS stem	Front side	Back side
<b>M5S</b>	1/2" NPT female (2x)	Flanged DIN19213 (2x)
<b>Standard specifications</b>		
Pressure	420 bar	
Vent/test connection	At bottom side	
Venting bonnet	At left and right side	
Isolating bonnet	Angular at top side	
Equalizing bonnet	Angular at top side	
Bracket holes	Yes	



**M5S**

- Options: ■ materials such as Monel, Duplex, steel available on request  
 ■ stem type SO  
 ■ up to 700 bar  
 ■ anti tamper facility with removable key

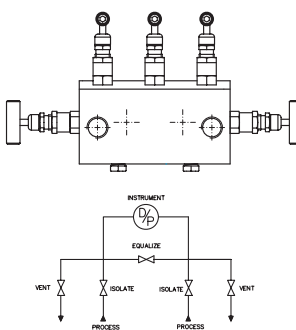
Model	Inlet (process)	Outlet (instrument)
With HS stem	Front side	Back side
<b>M5T</b>	1/2" NPT female (2x)	Flanged DIN19213 (2x)
<b>Standard specifications</b>		
Pressure	420 bar	
Vent/test connection	At bottom side	
Venting bonnet	At left and right side	
Isolating bonnet	At left and right side	
Equalizing bonnet	At top side	
Bracket holes	Yes	



**M5T**

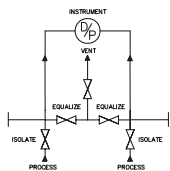
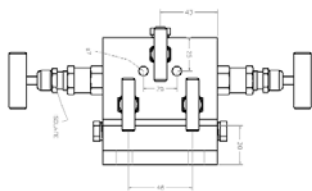
- Options: ■ materials such as Monel, Duplex, steel available on request  
 ■ stem type SO  
 ■ up to 700 bar  
 ■ anti tamper facility with removable key

Model	Inlet (process)	Outlet (instrument)
With HS stem	Front side	Back side
<b>M5V</b>	1/2" NPT female (2x)	1/2" NPT female (2x)
<b>Standard specifications</b>		
Pressure	420 bar	
Vent/test connection	At bottom side	
Venting bonnet	At left and right side	
Isolating bonnet	Angular at top side	
Equalizing bonnet	Angular at top side	
Bracket holes	Yes	



**M5V**

- Options: ■ materials such as Monel, Duplex, steel available on request  
 ■ stem type SO  
 ■ up to 700 bar  
 ■ anti tamper facility with removable key

**M5N**

Model	Inlet (process)	Outlet (instrument)
With HS stem	Front side	Back side
<b>M5N</b>	1/2" NPT female (2x)	Flanged DIN19213 (2x)
Standard specifications		
Pressure	420 bar	
Vent/test connection	At left and right side	
Venting bonnet	At top side	
Isolating bonnet	At left and right side	
Equalizing bonnet	At top side	
Bracket holes	Yes	

Options: ■ materials such as Monel, Duplex, steel available on request

■ stem type SO

■ up to 700 bar

■ anti tamper facility with removable key

