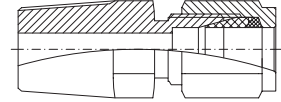


straight fittings

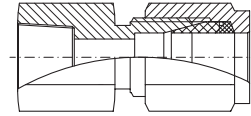
CMC male connector

available for tube $\frac{1}{8}$ " to 1" imperial and 4 mm to 25 mm metric, connections from $\frac{1}{8}$ " to 1" npt / bsp / bspt, standard material AISI316, fittings properly packed with the exposed threads protected.



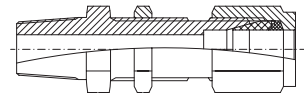
CFC female connector

available for tube $\frac{1}{8}$ " to 1" imperial and 4 mm to 25 mm metric, connections from $\frac{1}{8}$ " to 1" npt / bsp / bspt, standard material AISI316, fittings properly packed with the exposed threads protected.



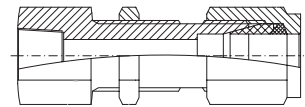
CBMC bulkhead male connector

available for tube $\frac{1}{8}$ " to $\frac{1}{2}$ " imperial and 4 mm to 12 mm metric, connections from $\frac{1}{8}$ " to $\frac{1}{2}$ " npt / bsp / bspt, standard material AISI316, fittings properly packed with the exposed threads protected.



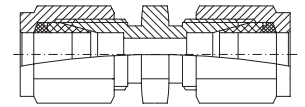
CBFC bulkhead female connector

available for tube $\frac{1}{8}$ " to $\frac{1}{2}$ " imperial and 4 mm to 12 mm metric, connections from $\frac{1}{8}$ " to $\frac{1}{2}$ " npt / bsp / bspt, standard material AISI316, fittings properly packed with the exposed threads protected.



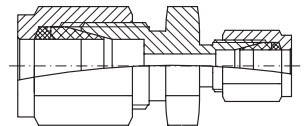
CUC tubing union

available for tube $\frac{1}{8}$ " to 1" imperial and 4 mm to 25 mm metric, standard material AISI316, fittings properly packed with the exposed threads protected.



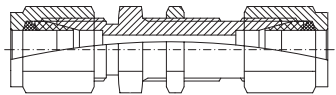
CRU reducing union

available for tube $\frac{1}{8}$ " to 1" imperial and 4 mm to 25 mm metric, standard material AISI316, fittings properly packed with the exposed threads protected.



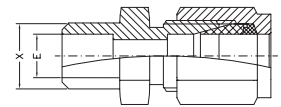
CBU bulkhead union

available for tube $\frac{1}{8}$ " to $\frac{1}{2}$ " imperial and 4 mm to 12 mm metric, standard material AISI316, fittings properly packed with the exposed threads protected.



CSWC socket weld connector

available for tube $\frac{1}{8}$ " to 1" imperial and 4 mm to 25 mm metric, standard material AISI316, fittings properly packed with the exposed threads protected.



CBWC but weld connector

available for tube $\frac{1}{8}$ " to 1" imperial and 4 mm to 25 mm metric, standard material AISI316, fittings properly packed with the exposed threads protected.

