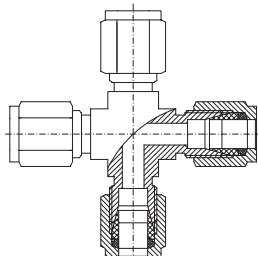


crosses and additional parts

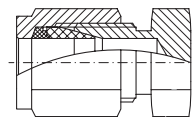
CRS union cross

available for tube $\frac{1}{8}$ " to $\frac{1}{2}$ " imperial and 4 mm to 12 mm metric,
standard material AISI316,
fittings properly packed with the exposed threads protected.



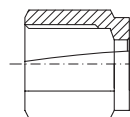
CCA cap

available for tube 1/8" to 1/2" imperial and 4 mm to 12 mm metric, standard material AISI316, fittings properly packed with the exposed threads protected.



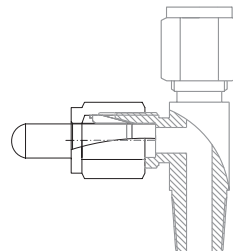
CTN tube nut

available for tube 1/8" to 1" imperial and 4 mm to 25 mm metric, standard material AISI316, fittings properly packed with the exposed threads protected.



CPL plug nut

available for tube 1/8" to 1" imperial and 4 mm to 25 mm metric, standard material AISI316, fittings properly packed with the exposed threads protected.



CFR ferrule set

available for tube 1/8" to 1" imperial and 4 mm to 25 mm metric, standard material AISI316 hardened.

