

Badotherm model BDT22 series gauges are available in 100 and 160 mm. These gauges are designed to withstand the severest of operating conditions created by the ambient environment and the process medium. The BDT 22 has a typical DIN appearance with the slim bayonet casing. The welded connection on 100 and 160 mm dia guarantees that when the case is filled no leakage will occur. All Badotherm stainless steel tubes are made from seamless drawn tube.



BDT22

stainless steel process pressure gauge

mounting variations

- type A bottom connection, direct mounting
- type B panel mounting, clamp fixing, back connection
- type C surface mounting, bottom connection
- type D back connection, direct mounting
- type E panel mounting, back connection
- type F panel mounting, bottom connection

technical specifications model BDT22

diameter	connection	window	ranges
100/160 mm	1/2" BSP/NPT	glass	from -1/1600 bar
slim casing	tube	movement	dial
AISI304 bayonet	AISI316	stainless steel	aluminium
slim bezel	socket	pointer	accuracy
AISI304 bayonet	AISI316	fixed	1.0% FSD

options and special executions at extra cost

casing	AISI316
bezel	AISI316
window	plastic
dials	customized – i.e., non standard ranges or logos
certificates	calibration -; conformity -; material
manuals	installation and maintenance
pointer	adjustable slotted
connection	METRIC; BSPT; acc JIS in various sizes
restrictor	AISI316
connection position	top or side
receiver gauge	3-15 psi; 0.2-1 bar; 0-100% lin; 0-10 sq.rt
red pointer	on dial 100 mm only
special version	with MONEL internals type BDT22-M
filling	glycerine; silicone; fluorolube

BDT22 - technical data sheet

pressure details

working pressure

Steady	full scale value
Fluctuating	0,9 x full scale value
Short time	see over-pressure table

pressure element

	<100 bar	≥ 100 bar
BDT22	AISI316	AISI316

over-pressure

max. scale in bar			over-pressure at 20 °C
-1	to	100	1,25 x full scale value
101	to	600	1,15 x full scale value
601	to	1600	1,10 x full scale value

Note : only withstand for a short period of time

temperature details

temperature limitations

	ambient	process
without filling	-40 °C to 60 °C	200 °C
glycerine filling	-25 °C to 60 °C	60 °C
silicone filling	-40 °C to 60 °C	90 °C

The variation of indication caused by the effects of temperature shall not exceed :

$\pm 0,04 \times (\text{ambient temperature-reference temperature})\%$
of the span

design information

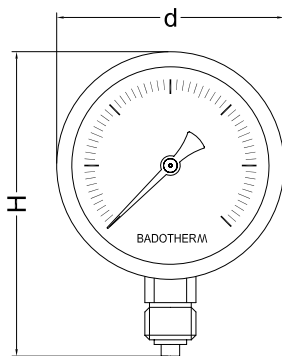
ingress protection

IP 65 per EN 60 529 / IEC 529

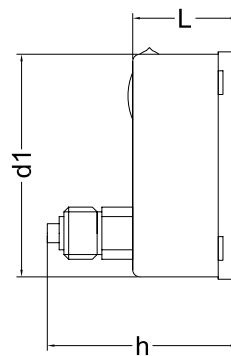
design

EN 837-1

drawings



type A



type D

dimensions

ns	d	d1	L	H	h	weight
100	101,5	99	50	140	83	0,60 kg
160	161	159	50	200	83	0,90 kg

Note : dimensions are in mm