

Thermo-FID (Model MK) VOC Analyser



VOC Analyser

The Thermo-FID Model MK VOC stack mounted analyser is microprocessor-controlled and fully automated. The instrument is self-calibrating and virtually maintenance-free with user friendly self-diagnostics and clear text status information.

The instrument comprises an IP65 field-rated enclosure with a close-coupled heated sampling probe and is capable of measuring organic compound components from high range (ppm) to very low range (LEL).

The sample probe can be heated to 60°C - 200°C and comprises a DN80 (DIN2527-PN16) flange, direct mounted onto the enclosure and detector assembly. No further sample conditioning is required.

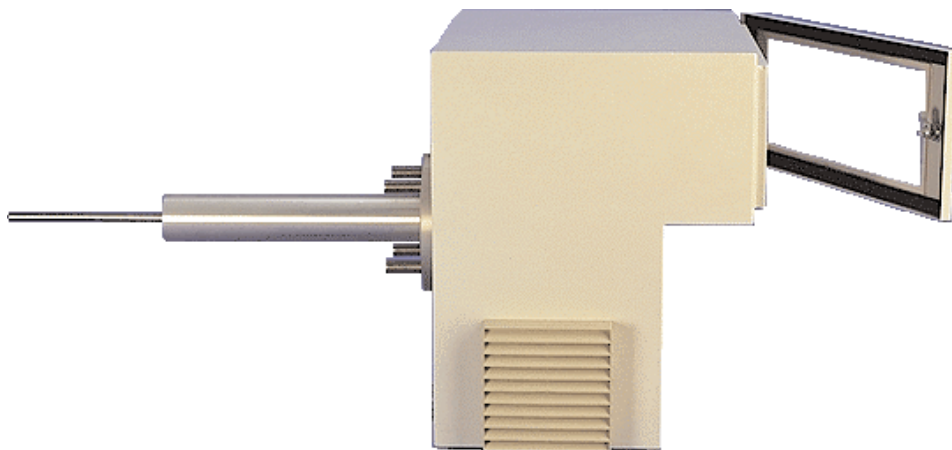
Organic compound components are ionised in a hydrocarbon-free hydrogen flame - microprocessor controlled sample flow driven by heated ejector pumps (or unheated membrane pump) located after the burner chamber. Sample gas control and pressure compensation is from -300hPA to 1600hPA.

- extractive VOC analyser
- stainless steel sample probe
- virtually maintenance-free operation
- data selectable in ppm, mg/m3, g/m3, vol% & %UEG
- TUV approved

Maintenance interval (sample filter change) is determined from the status and remote control functions of the analyser.

All pipe and cable connections are located at the bottom of the enclosure for easy access.

The instrument is suitable for waste/industrial incinerators, cement kilns, boilers and various steel industry applications.

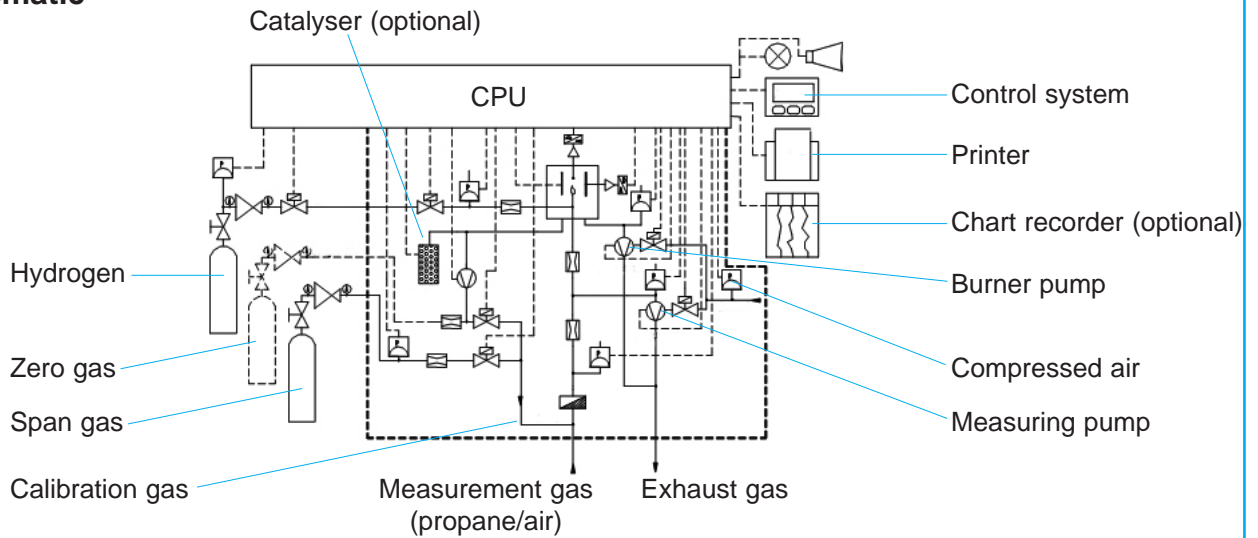


Total Solutions - Total Confidence

SmartCem



Schematic



Specification

Measurements

Range	: 15 to 30mg/m ³ organic compound
Signal Drift	: due to barometric pressure - <0.1% : due to change in sample gas pressure - zero @ -300hPA to 1600hPA
Zero Drift	: +/-1% per week
Span Drift	: +/-1.7% of FS per week
Resolution	: 5ppm
Response Time (T ₉₀)	: 1 to 2 seconds

Compliances

EMC	: 89/336/EEC directive compliant
Low Voltage	: 73/23/EEC directive compliant

Input & Outputs

Analogue Input	: 1 x 4-20mA current input, isolated, for hydrogen control
Analogue Output	: 1 x 0/4-20mA current output, 600W (not isolated), for display unit

General

Mains Power	: 115V or 230V AC @ 50/60Hz, 250VA
Display Unit	: showing clear text information of measurement, status, alarm and diagnostic data
Ambient Temperature	: -20°C to +40°C
Probe Temperature	: 60°C - 200°C
Instrument Air	: oil & water free, dew point -20°C, 2Nm ³ /hr @ 4bar
Hydrogen	: preferably bottled, 40ml/min @ 1bar
Span Gas	: 130NI/hr @ 2.5bar

Optional Equipment

Comprising : chart recorder, remote access software, mains outlet for heated sample line, sample switching assemblies, THC & methane catalyser, stripper for measuring organic compounds in water, back purge sampling.

SmartCem

CODEL International Ltd.
Station Building, Station Road
Bakewell, Derbyshire DE45 1GE
England

Tel: +44 (0) 1629 814 351
Fax: +44 (0) 8700 566 307
e-mail: codel@codel.co.uk
web site: www.codel.co.uk

Distributor :

