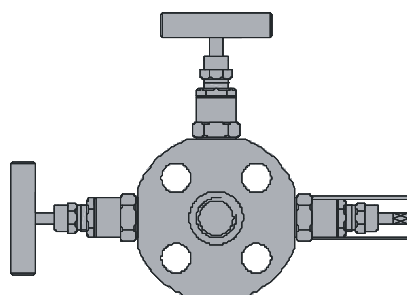
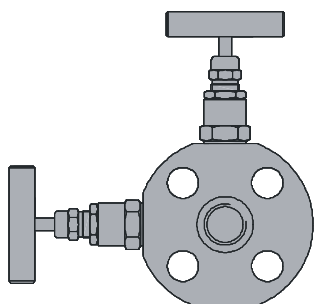
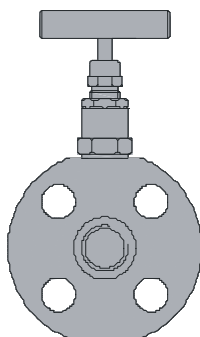


***Monoflange
Valves***



.....INDEX....for Monoflange Valves**Instrument Monoflange Valves**

- - SINGLE BLOCK – INST. MONOFLANGE VALVE
PRODUCT CODE : CIMV-I.....pg.03
- - DOUBLE BLOCK – INST. MONOFLANGE VALVE
PRODUCT CODE : CIMV-BB.....pg.07
- - BLOCK & BLEED – INST. MONOFLANGE VALVE
PRODUCT CODE : CIMV-IB.....pg.11
- - DOUBLE BLOCK & BLEED – INST. MONOFLANGE VALVE
PRODUCT CODE : CIMV-IBI.....pg.14

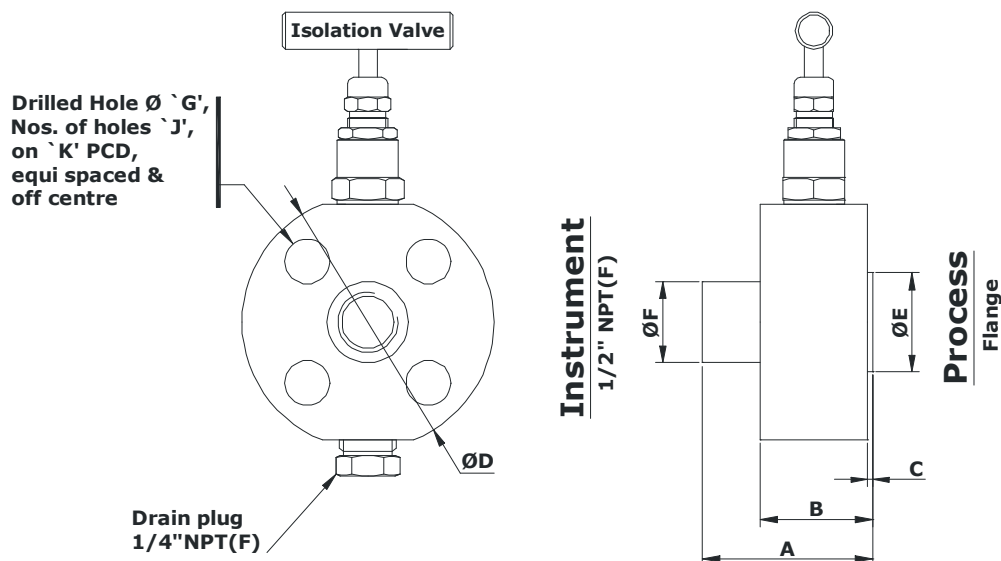
Process Monoflange Valves

- - SINGLE BLOCK – INST. MONOFLANGE VALVE
PRODUCT CODE : CPMV-I.....pg.05
- - DOUBLE BLOCK – INST. MONOFLANGE VALVE
PRODUCT CODE : CPMV-BB.....pg.09
- - BLOCK & BLEED – INST. MONOFLANGE VALVE
PRODUCT CODE : CPMV-IB.....pg.13
- - DOUBLE BLOCK & BLEED – INST. MONOFLANGE VALVE
PRODUCT CODE : CPMV-IBI.....pg.17

INSTRUMENT MONOFLANGE VALVE

- SINGLE BLOCK - PRODUCT CODE : CIMV-I

Schematic Diagram



- Height of installed screwed bonnet needle valve : 73 open
- Height of installed O.S. & Y. type needle valve : 107 open
- Height of installed anti tamper needle valve : 70 open

Size	Class	Part name	A	B	C	ØD	ØE	ØF	ØG	J	ØK
1/2"	150#	CIMV-I - 8 - 1	60	40	1.59	88.90	35.05	28.58	15.75	4	60.45
3/4"		CIMV-I - 12 - 1	60	40	1.59	98.55	42.93	31.75	15.75	4	69.85
1"		CIMV-I - 16 - 1	60	40	1.59	107.95	50.80	31.75	15.75	4	79.25
1-1/2"		CIMV-I - 24 - 1	67	40	1.59	127.00	73.15	50.80	15.75	4	98.55
2"		CIMV-I - 32 - 1	60	40	1.59	152.40	91.95	50.80	19.05	4	120.65
1/2"	300#	CIMV-I - 8 - 2	60	40	1.59	95.25	35.05	31.75	15.75	4	66.55
3/4"		CIMV-I - 12 - 2	60	40	1.59	117.35	42.93	38.10	19.05	4	82.55
1"		CIMV-I - 16 - 2	60	40	1.59	123.95	50.80	38.10	19.05	4	88.90
1-1/2"		CIMV-I - 24 - 2	60	40	1.59	155.45	73.15	50.80	22.35	4	114.30
2"		CIMV-I - 32 - 2	60	40	1.59	165.10	91.95	50.80	19.05	8	127.00
1/2"	600#	CIMV-I - 8 - 4	60	45	6.35	95.25	35.05	31.75	15.75	4	66.55
3/4"		CIMV-I - 12 - 4	60	45	6.35	117.35	42.93	38.10	19.05	4	82.55
1"		CIMV-I - 16 - 4	60	45	6.35	123.95	50.80	38.10	19.05	4	88.90
1-1/2"		CIMV-I - 24 - 4	60	45	6.35	155.45	73.15	50.80	22.35	4	114.30
2"		CIMV-I - 32 - 4	60	48	6.35	165.10	91.95	50.80	19.05	8	127.00
1/2"	900/1500	CIMV-I - 8 - 6	60	45	6.35	120.65	35.05	31.75	22.35	4	82.55
3/4"		CIMV-I - 12 - 6	60	48	6.35	130.05	42.93	38.10	22.35	4	88.90
1"		CIMV-I - 16 - 6	67	51	6.35	149.35	50.80	38.10	25.40	4	101.60
1-1/2"		CIMV-I - 24 - 6	74	54	6.35	177.80	73.15	38.10	28.45	4	123.95
2"		CIMV-I - 32 - 6	67	61	6.35	215.90	91.95	50.80	25.4	8	165.10
1/2"	2500	CIMV-I - 8 - 16	60	54	6.35	133.35	35.05	31.75	22.35	4	88.90
3/4"		CIMV-I - 12 - 16	60	54	6.35	139.70	42.93	38.10	22.35	4	95.25
1"		CIMV-I - 16 - 16	67	57	6.35	158.75	50.80	38.10	25.40	4	107.95
1-1/2"		CIMV-I - 24 - 16	80	67	6.35	203.20	73.15	50.80	31.75	4	146.05
2"		CIMV-I - 32 - 16	80	73	6.35	234.95	91.95	50.80	28.45	8	171.45

PROCESS MONOFLANGE VALVE**- SINGLE BLOCK - PRODUCT CODE : CPMV-I****Description**

- One-piece forged or bar stock body combines a compact design with strength and reduced potential leak paths compared to conventional designs.
- In this valve one primary isolation OS & Y globe type needle valve is assembled & option drain port given with plug on the periphery of the flange. where the valve is directly mounted to the vessel or process pipe. Instruments may be directly mounted to the valve outlet or alternatively remotely mounted with gauge lines/impulse pipe work.

Features

- Size - 1/2" to 2" NB Flanges
- End connection - Process (Inlet) : Flange Size : 1/2", 3/4", 1", 1-1/2", 2"
Flange Class : 150#, 300#, 600#, 900#, 1500#, 2500#
Flange Face Style : Raise Face, Ring Type Joint
- Instrument (Outlet) : Size : 1/4", 3/8", 1/2" Standard
- Connection Style : NPT(F), NPT(M), ODT (Duble Ferrule)
- Vent Connection : 1/4" NPT(F) Standard,
3/8" NPT(F), 1/2" NPT(F)
- Mounting : Horizontal (standard) & Vertical
- Material - C.S. (ASTM A 105), S.S. (ASTM A182-F316), Monel M400, Duplex ASTM A182-F51 Hastelloy C-276, Valve can be supplied to meet the current revision of NACE MR-01-75 (Sour Gas service).
- Packing - PTFE, Grafoil
- All valves are 100% factory tested prior to shipment.
- Lubrication - Dye molly sulphide.
- Test conducted - Pneumatic Seat test is performed at 1/4 of working pressure.
 - Hydrostatic Shell Test is performed at 1.5 times the working pressure.
 - Optional test are available on request.

Applications

- Isolation service, Pressure measurement, Level measurement, Sampling.

Standard Feature

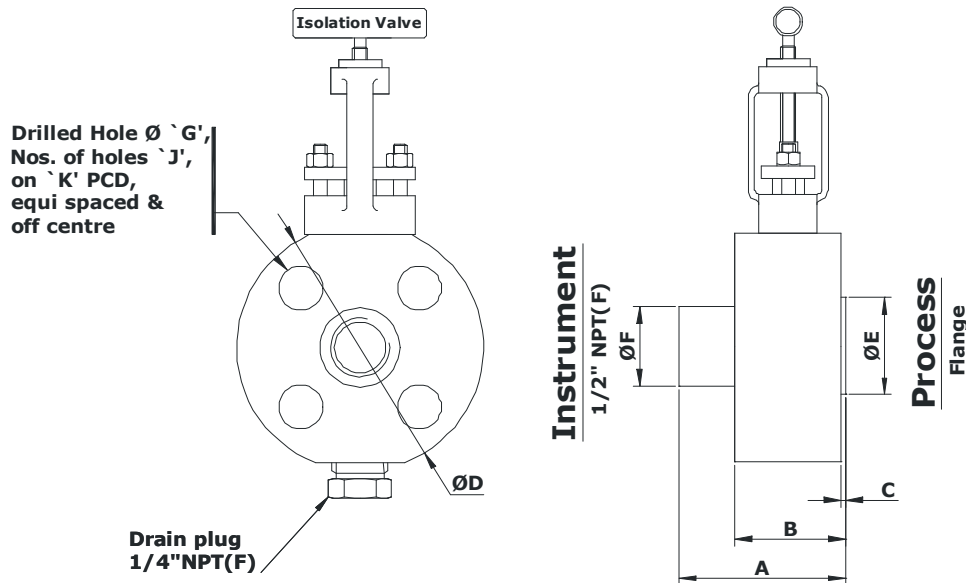
- 1/2-inch NPT threaded female outlet as standard to ANSI/ASME B1.20.1.
- Flange standard as per ANSI/ASME B 16.5

Bonnet Design

- Screwed Bonnet Design.
- Stem : Ground and thread rolled.
- Hard seat : - with non-rotating stem tip (with ST6).
- with rotating stem tip-regulating & Soft seat .
- Bonnet Pusher : Silver plated for anti-galling freezing for increased stem cycle life.
- Dust Cap on bonnet pusher protects stem threads from external contamination.
- Packing and sealing are leak tight for easy operation.

PROCESS MONOFLANGE VALVE
- SINGLE BLOCK - PRODUCT CODE : CPMV-I

Schematic Diagram



- Height of installed screwed bonnet needle valve : 73 open
- Height of installed O.S. & Y. type needle valve : 107 open
- Height of installed anti tamper needle valve : 70 open

Size	Class	Part name	A	B	C	ØD	ØE	ØF	ØG	J	ØK
1/2"	150#	CIMV-I - 8 - 1	60	40	1.59	88.90	35.05	28.58	15.75	4	60.45
3/4"		CIMV-I - 12 - 1	60	40	1.59	98.55	42.93	31.75	15.75	4	69.85
1"		CIMV-I - 16 - 1	60	40	1.59	107.95	50.80	31.75	15.75	4	79.25
1-1/2"		CIMV-I - 24 - 1	67	40	1.59	127.00	73.15	50.80	15.75	4	98.55
2"		CIMV-I - 32 - 1	60	40	1.59	152.40	91.95	50.80	19.05	4	120.65
1/2"	300#	CIMV-I - 8 - 2	60	40	1.59	95.25	35.05	31.75	15.75	4	66.55
3/4"		CIMV-I - 12 - 2	60	40	1.59	117.35	42.93	38.10	19.05	4	82.55
1"		CIMV-I - 16 - 2	60	40	1.59	123.95	50.80	38.10	19.05	4	88.90
1-1/2"		CIMV-I - 24 - 2	60	40	1.59	155.45	73.15	50.80	22.35	4	114.30
2"		CIMV-I - 32 - 2	60	40	1.59	165.10	91.95	50.80	19.05	8	127.00
1/2"	600#	CIMV-I - 8 - 4	60	45	6.35	95.25	35.05	31.75	15.75	4	66.55
3/4"		CIMV-I - 12 - 4	60	45	6.35	117.35	42.93	38.10	19.05	4	82.55
1"		CIMV-I - 16 - 4	60	45	6.35	123.95	50.80	38.10	19.05	4	88.90
1-1/2"		CIMV-I - 24 - 4	60	45	6.35	155.45	73.15	50.80	22.35	4	114.30
2"		CIMV-I - 32 - 4	60	48	6.35	165.10	91.95	50.80	19.05	8	127.00
1/2"	900/1500	CIMV-I - 8 - 6	60	45	6.35	120.65	35.05	31.75	22.35	4	82.55
3/4"		CIMV-I - 12 - 6	60	48	6.35	130.05	42.93	38.10	22.35	4	88.90
1"		CIMV-I - 16 - 6	67	51	6.35	149.35	50.80	38.10	25.40	4	101.60
1-1/2"		CIMV-I - 24 - 6	74	54	6.35	177.80	73.15	38.10	28.45	4	123.95
2"		CIMV-I - 32 - 6	67	61	6.35	215.90	91.95	50.80	25.4	8	165.10
1/2"	2500	CIMV-I - 8 - 16	60	54	6.35	133.35	35.05	31.75	22.35	4	88.90
3/4"		CIMV-I - 12 - 16	60	54	6.35	139.70	42.93	38.10	22.35	4	95.25
1"		CIMV-I - 16 - 16	67	57	6.35	158.75	50.80	38.10	25.40	4	107.95
1-1/2"		CIMV-I - 24 - 16	80	67	6.35	203.20	73.15	50.80	31.75	4	146.05
2"		CIMV-I - 32 - 16	80	73	6.35	234.95	91.95	50.80	28.45	8	171.45

INSTRUMENT MONOFLANGE VALVE**- DOUBLE BLOCK - PRODUCT CODE : CIMV-BB****Description**

- One-piece forged or bar stock body combines a compact design with strength and reduced potential leak paths compared to conventional designs.
- In this valve primary & secondary both isolation globe type needle valves are assembled & option drain port given with plug on the periphery of the flange. where the valve is directly mounted to the vessel or process pipe. Instruments may be directly mounted to the valve outlet or alternatively remotely mounted with gauge lines/impulse pipe work.

Features

- Size - 1/2" to 2" NB Flanges
- End connection - Process (Inlet) : Flange Size : 1/2", 3/4", 1", 1-1/2", 2"
Flange Class : 150#, 300#, 600#, 900#, 1500#, 2500#
Flange Face Style : Raise Face, Ring Type Joint
- Instrument (Outlet) : Size : 1/4", 3/8", 1/2" Standard
- Connection Style : NPT(F), NPT(M), ODT (Duble Ferrule)
- Vent Connection : 1/4" NPT(F) Standard,
3/8" NPT(F), 1/2" NPT(F)
- Mounting : Horizontal (standard) & Vertical
- Material - C.S. (ASTM A 105), S.S. (ASTM A182-F316), Monel M400, Duplex ASTM A182-F51 Hastelloy C-276, Valve can be supplied to meet the current revision of NACE MR-01-75 (Sour Gas service).
- Packing - PTFE, Grafoil
- All valves are 100% factory tested prior to shipment.
- Lubrication - Dye molly sulphide.
- Test conducted - Pneumatic Seat test is performed at 1/4 of working pressure.
 - Hydrostatic Shell Test is performed at 1.5 times the working pressure.
 - Optional test are available on request.

Applications

- Isolation service, Pressure measurement, Level measurement, Sampling.

Standard Feature

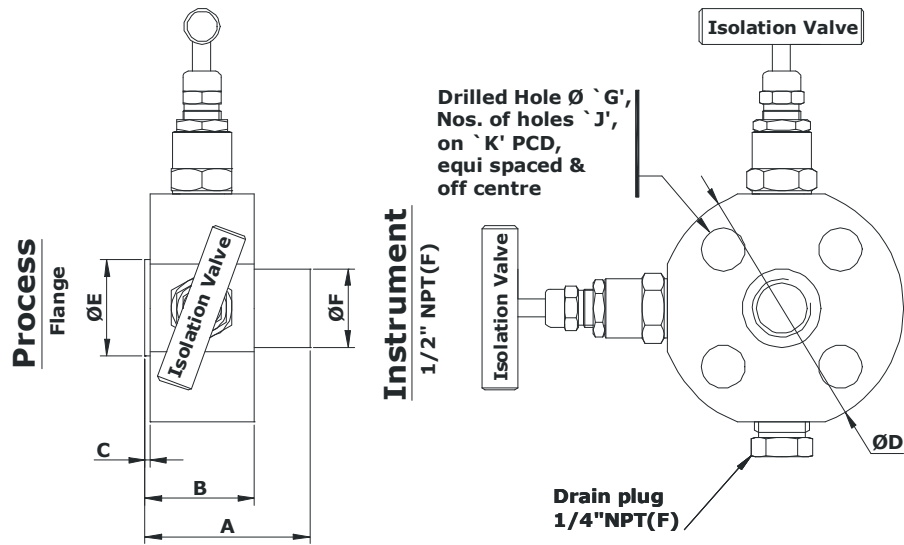
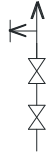
- 1/2-inch NPT threaded female outlet as standard to ANSI/ASME B1.20.1.
- Flange standard as per ANSI/ASME B 16.5

Bonnet Design

- Screwed Bonnet Design.
- Stem : Ground and thread rolled.
- Hard seat : - with non-rotating stem tip (with ST6).
- with rotating stem tip-regulating & Soft seat .
- Bonnet Pusher : Silver plated for anti-galling freezing for increased stem cycle life.
- Dust Cap on bonnet pusher protects stem threads from external contamination.
- Packing and sealing are leak tight for easy operation.

INSTRUMENT MONOFLANGE VALVE
- DOUBLE BLOCK - PRODUCT CODE : CIMV-BB

Schematic Diagram



- Height of installed screwed bonnet needle valve : 73 open
- Height of installed O.S. & Y. type needle valve : 107 open
- Height of installed anti tamper needle valve : 70 open

Size	Class	Part name	A	B	C	ØD	ØE	ØF	ØG	J	ØK
1/2"	150#	CIMV-I - 8 - 1	60	40	1.59	88.90	35.05	28.58	15.75	4	60.45
3/4"		CIMV-I - 12 - 1	60	40	1.59	98.55	42.93	31.75	15.75	4	69.85
1"		CIMV-I - 16 - 1	60	40	1.59	107.95	50.80	31.75	15.75	4	79.25
1-1/2"		CIMV-I - 24 - 1	67	40	1.59	127.00	73.15	50.80	15.75	4	98.55
2"		CIMV-I - 32 - 1	60	40	1.59	152.40	91.95	50.80	19.05	4	120.65
1/2"	300#	CIMV-I - 8 - 2	60	40	1.59	95.25	35.05	31.75	15.75	4	66.55
3/4"		CIMV-I - 12 - 2	60	40	1.59	117.35	42.93	38.10	19.05	4	82.55
1"		CIMV-I - 16 - 2	60	40	1.59	123.95	50.80	38.10	19.05	4	88.90
1-1/2"		CIMV-I - 24 - 2	60	40	1.59	155.45	73.15	50.80	22.35	4	114.30
2"		CIMV-I - 32 - 2	60	40	1.59	165.10	91.95	50.80	19.05	8	127.00
1/2"	600#	CIMV-I - 8 - 4	60	45	6.35	95.25	35.05	31.75	15.75	4	66.55
3/4"		CIMV-I - 12 - 4	60	45	6.35	117.35	42.93	38.10	19.05	4	82.55
1"		CIMV-I - 16 - 4	60	45	6.35	123.95	50.80	38.10	19.05	4	88.90
1-1/2"		CIMV-I - 24 - 4	60	45	6.35	155.45	73.15	50.80	22.35	4	114.30
2"		CIMV-I - 32 - 4	60	48	6.35	165.10	91.95	50.80	19.05	8	127.00
1/2"	900/1500	CIMV-I - 8 - 6	60	45	6.35	120.65	35.05	31.75	22.35	4	82.55
3/4"		CIMV-I - 12 - 6	60	48	6.35	130.05	42.93	38.10	22.35	4	88.90
1"		CIMV-I - 16 - 6	67	51	6.35	149.35	50.80	38.10	25.40	4	101.60
1-1/2"		CIMV-I - 24 - 6	74	54	6.35	177.80	73.15	38.10	28.45	4	123.95
2"		CIMV-I - 32 - 6	67	61	6.35	215.90	91.95	50.80	25.4	8	165.10
1/2"	2500	CIMV-I - 8 - 16	60	54	6.35	133.35	35.05	31.75	22.35	4	88.90
3/4"		CIMV-I - 12 - 16	60	54	6.35	139.70	42.93	38.10	22.35	4	95.25
1"		CIMV-I - 16 - 16	67	57	6.35	158.75	50.80	38.10	25.40	4	107.95
1-1/2"		CIMV-I - 24 - 16	80	67	6.35	203.20	73.15	50.80	31.75	4	146.05
2"		CIMV-I - 32 - 16	80	73	6.35	234.95	91.95	50.80	28.45	8	171.45

PROCESS MONOFLANGE VALVE**- DOUBLE BLOCK - PRODUCT CODE : CPMV-BB****Description**

- One-piece forged or bar stock body combines a compact design with strength and reduced potential leak paths compared to conventional designs.
- In this valve primary OS & Y globe type needle valve & secondary isolation globe type needle valve are assembled & option drain port given with plug on the periphery of the flange. where the valve is directly mounted to the vessel or process pipe. Instruments may be directly mounted to the valve outlet or alternatively remotely mounted with gauge lines/impulse pipe work.

Features

- Size - 1/2" to 2" NB Flanges
- End connection - Process (Inlet) : Flange Size : 1/2", 3/4", 1", 1-1/2", 2"
Flange Class : 150#, 300#, 600#, 900#, 1500#, 2500#
Flange Face Style : Raise Face, Ring Type Joint
- Instrument (Outlet) : Size : 1/4", 3/8", 1/2" Standard
- Connection Style : NPT(F), NPT(M), ODT (Duble Ferrule)
- Vent Connection : 1/4" NPT(F) Standard,
3/8" NPT(F), 1/2" NPT(F)
- Mounting : Horizontal (standard) & Vertical
- Material - C.S. (ASTM A 105), S.S. (ASTM A182-F316), Monel M400, Duplex ASTM A182-F51 Hastelloy C-276, Valve can be supplied to meet the current revision of NACE MR-01-75 (Sour Gas service).
- Packing - PTFE, Grafoil
- All valves are 100% factory tested prior to shipment.
- Lubrication - Dye molly sulphide.
- Test conducted - Pneumatic Seat test is performed at 1/4 of working pressure.
 - Hydrostatic Shell Test is performed at 1.5 times the working pressure.
 - Optional test are available on request.

Applications

- Isolation service, Pressure measurement, Level measurement, Sampling.

Standard Feature

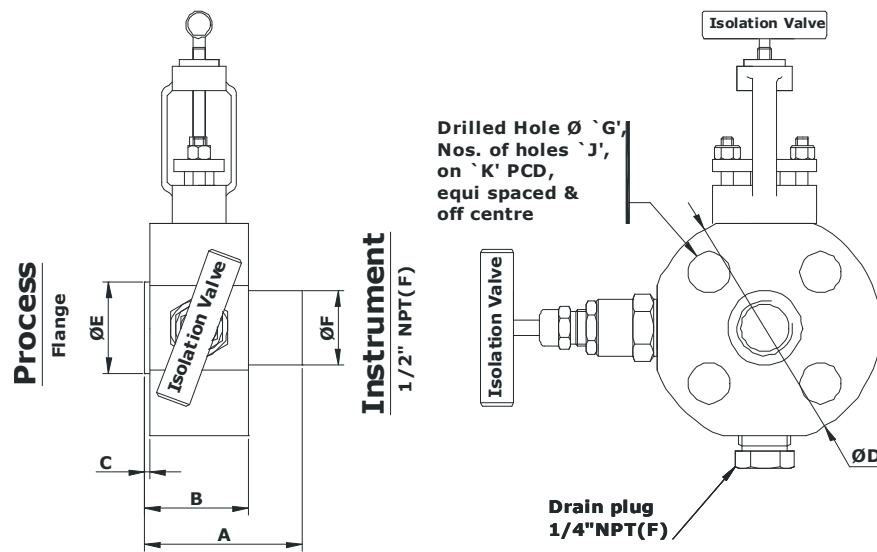
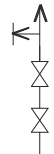
- 1/2-inch NPT threaded female outlet as standard to ANSI/ASME B1.20.1.
- Flange standard as per ANSI/ASME B 16.5

Bonnet Design

- Screwed Bonnet Design.
- Stem : Ground and thread rolled.
- Hard seat : - with non-rotating stem tip (with ST6).
 - with rotating stem tip-regulating & Soft seat .
- Bonnet Pusher : Silver plated for anti-galling freezing for increased stem cycle life.
- Dust Cap on bonnet pusher protects stem threads from external contamination.
- Packing and sealing are leak tight for easy operation.

PROCESS MONOFLANGE VALVE
- DOUBLE BLOCK - PRODUCT CODE : CPMV-BB

Schematic Diagram



- Height of installed screwed bonnet needle valve : 73 open
- Height of installed O.S. & Y. type needle valve : 107 open
- Height of installed anti tamper needle valve : 70 open

Size	Class	Part name	A	B	C	ØD	ØE	ØF	ØG	J	ØK
1/2"	150#	CIMV-I - 8 - 1	60	40	1.59	88.90	35.05	28.58	15.75	4	60.45
3/4"		CIMV-I - 12 - 1	60	40	1.59	98.55	42.93	31.75	15.75	4	69.85
1"		CIMV-I - 16 - 1	60	40	1.59	107.95	50.80	31.75	15.75	4	79.25
1-1/2"		CIMV-I - 24 - 1	67	40	1.59	127.00	73.15	50.80	15.75	4	98.55
2"		CIMV-I - 32 - 1	60	40	1.59	152.40	91.95	50.80	19.05	4	120.65
1/2"	300#	CIMV-I - 8 - 2	60	40	1.59	95.25	35.05	31.75	15.75	4	66.55
3/4"		CIMV-I - 12 - 2	60	40	1.59	117.35	42.93	38.10	19.05	4	82.55
1"		CIMV-I - 16 - 2	60	40	1.59	123.95	50.80	38.10	19.05	4	88.90
1-1/2"		CIMV-I - 24 - 2	60	40	1.59	155.45	73.15	50.80	22.35	4	114.30
2"		CIMV-I - 32 - 2	60	40	1.59	165.10	91.95	50.80	19.05	8	127.00
1/2"	600#	CIMV-I - 8 - 4	60	45	6.35	95.25	35.05	31.75	15.75	4	66.55
3/4"		CIMV-I - 12 - 4	60	45	6.35	117.35	42.93	38.10	19.05	4	82.55
1"		CIMV-I - 16 - 4	60	45	6.35	123.95	50.80	38.10	19.05	4	88.90
1-1/2"		CIMV-I - 24 - 4	60	45	6.35	155.45	73.15	50.80	22.35	4	114.30
2"		CIMV-I - 32 - 4	60	48	6.35	165.10	91.95	50.80	19.05	8	127.00
1/2"	900/1500	CIMV-I - 8 - 6	60	45	6.35	120.65	35.05	31.75	22.35	4	82.55
3/4"		CIMV-I - 12 - 6	60	48	6.35	130.05	42.93	38.10	22.35	4	88.90
1"		CIMV-I - 16 - 6	67	51	6.35	149.35	50.80	38.10	25.40	4	101.60
1-1/2"		CIMV-I - 24 - 6	74	54	6.35	177.80	73.15	38.10	28.45	4	123.95
2"		CIMV-I - 32 - 6	67	61	6.35	215.90	91.95	50.80	25.4	8	165.10
1/2"	2500	CIMV-I - 8 - 16	60	54	6.35	133.35	35.05	31.75	22.35	4	88.90
3/4"		CIMV-I - 12 - 16	60	54	6.35	139.70	42.93	38.10	22.35	4	95.25
1"		CIMV-I - 16 - 16	67	57	6.35	158.75	50.80	38.10	25.40	4	107.95
1-1/2"		CIMV-I - 24 - 16	80	67	6.35	203.20	73.15	50.80	31.75	4	146.05
2"		CIMV-I - 32 - 16	80	73	6.35	234.95	91.95	50.80	28.45	8	171.45

INSTRUMENT MONOFLANGE VALVE

- BLOCK & BLEED - PRODUCT CODE : CIMV-IB

Description

- One-piece forged or bar stock body combines a compact design with strength and reduced potential leak paths compared to conventional designs.
- In this valve one primary isolation globe type needle valve , secondary drain anti-tamper globe type needle valve assembled & option drain port given with plug on the periphery of the flange. where the valve is directly mounted to the vessel or process pipe Instruments may be directly mounted to the valve outlet or alternatively remotely mounted with gauge lines/impulse pipe work.

Features

- Size - 1/2" to 2" NB Flanges
- End connection - Process (Inlet) : Flange Size : 1/2", 3/4", 1", 1-1/2", 2"
Flange Class : 150#, 300#, 600#, 900#, 1500#, 2500#
Flange Face Style : Raise Face, Ring Type Joint
- Instrument (Outlet) : Size : 1/4", 3/8", 1/2" Standard
- Connection Style : NPT(F), NPT(M), ODT (Duble Ferrule)
- Vent Connection : 1/4" NPT(F) Standard,
3/8" NPT(F), 1/2" NPT(F)
- Mounting : Horizontal (standard) & Vertical
- Material - C.S. (ASTM A 105), S.S. (ASTM A182-F316), Monel M400, Duplex ASTM A182-F51 Hastelloy C-276, Valve can be supplied to meet the current revision of NACE MR-01-75 (Sour Gas service).
- Packing - PTFE, Grafoil
- All valves are 100% factory tested prior to shipment.
- Lubrication - Dye molly sulphide.
- Test conducted - Pneumatic Seat test is performed at 1/4 of working pressure.
 - Hydrostatic Shell Test is performed at 1.5 times the working pressure.
 - Optional test are available on request.

Applications

- Isolation service, Pressure measurement, Level measurement, Sampling.

Standard Feature

- 1/2-inch NPT threaded female outlet as standard to ANSI/ASME B1.20.1.
- Flange standard as per ANSI/ASME B 16.5

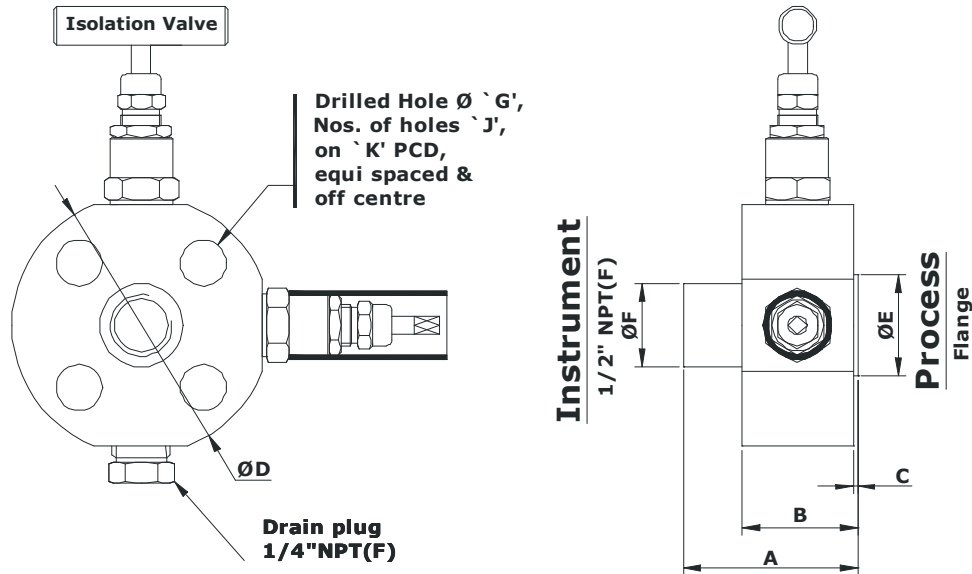
Bonnet Design

- Screwed Bonnet Design.
- Stem : Ground and thread rolled.
- Hard seat : - with non-rotating stem tip (with ST6).
 - with rotating stem tip-regulating & Soft seat .
- Bonnet Pusher : Silver plated for anti-galling freezing for increased stem cycle life.
- Dust Cap on bonnet pusher protects stem threads from external contamination.
- Packing and sealing are leak tight for easy operation.

INSTRUMENT MONOFLANGE VALVE

- BLOCK & BLEED - PRODUCT CODE : CIMV-IB

Schematic Diagram



- Height of installed screwed bonnet needle valve : 73 open
- Height of installed O.S. & Y. type needle valve : 107 open
- Height of installed anti tamper needle valve : 70 open

Size	Class	Part name	A	B	C	ØD	ØE	ØF	ØG	J	ØK
1/2"	150#	CIMV-I - 8 - 1	60	40	1.59	88.90	35.05	28.58	15.75	4	60.45
3/4"		CIMV-I - 12 - 1	60	40	1.59	98.55	42.93	31.75	15.75	4	69.85
1"		CIMV-I - 16 - 1	60	40	1.59	107.95	50.80	31.75	15.75	4	79.25
1-1/2"		CIMV-I - 24 - 1	67	40	1.59	127.00	73.15	50.80	15.75	4	98.55
2"		CIMV-I - 32 - 1	60	40	1.59	152.40	91.95	50.80	19.05	4	120.65
1/2"	300#	CIMV-I - 8 - 2	60	40	1.59	95.25	35.05	31.75	15.75	4	66.55
3/4"		CIMV-I - 12 - 2	60	40	1.59	117.35	42.93	38.10	19.05	4	82.55
1"		CIMV-I - 16 - 2	60	40	1.59	123.95	50.80	38.10	19.05	4	88.90
1-1/2"		CIMV-I - 24 - 2	60	40	1.59	155.45	73.15	50.80	22.35	4	114.30
2"		CIMV-I - 32 - 2	60	40	1.59	165.10	91.95	50.80	19.05	8	127.00
1/2"	600#	CIMV-I - 8 - 4	60	45	6.35	95.25	35.05	31.75	15.75	4	66.55
3/4"		CIMV-I - 12 - 4	60	45	6.35	117.35	42.93	38.10	19.05	4	82.55
1"		CIMV-I - 16 - 4	60	45	6.35	123.95	50.80	38.10	19.05	4	88.90
1-1/2"		CIMV-I - 24 - 4	60	45	6.35	155.45	73.15	50.80	22.35	4	114.30
2"		CIMV-I - 32 - 4	60	48	6.35	165.10	91.95	50.80	19.05	8	127.00
1/2"	900/1500	CIMV-I - 8 - 6	60	45	6.35	120.65	35.05	31.75	22.35	4	82.55
3/4"		CIMV-I - 12 - 6	60	48	6.35	130.05	42.93	38.10	22.35	4	88.90
1"		CIMV-I - 16 - 6	67	51	6.35	149.35	50.80	38.10	25.40	4	101.60
1-1/2"		CIMV-I - 24 - 6	74	54	6.35	177.80	73.15	38.10	28.45	4	123.95
2"		CIMV-I - 32 - 6	67	61	6.35	215.90	91.95	50.80	25.4	8	165.10
1/2"	2500	CIMV-I - 8 - 16	60	54	6.35	133.35	35.05	31.75	22.35	4	88.90
3/4"		CIMV-I - 12 - 16	60	54	6.35	139.70	42.93	38.10	22.35	4	95.25
1"		CIMV-I - 16 - 16	67	57	6.35	158.75	50.80	38.10	25.40	4	107.95
1-1/2"		CIMV-I - 24 - 16	80	67	6.35	203.20	73.15	50.80	31.75	4	146.05
2"		CIMV-I - 32 - 16	80	73	6.35	234.95	91.95	50.80	28.45	8	171.45

PROCESS MONOFLANGE VALVE

- BLOCK & BLEED - PRODUCT CODE : CPMV-IB

Description

- One-piece forged or bar stock body combines a compact design with strength and reduced potential leak paths compared to conventional designs.
- In this valve primary isolation OS & Y type globe needle valve, secondary drain anti-tamper globe type needle valve are assembled & option drain port given with plug on the periphery of the flange. where the valve is directly mounted to the vessel or process pipe. Instruments may be directly mounted to the valve outlet or alternatively remotely mounted with gauge lines/impulse pipe work.

Features

- Size - 1/2" to 2" NB Flanges
- End connection - Process (Inlet) : Flange Size : 1/2", 3/4", 1", 1-1/2", 2"
Flange Class : 150#, 300#, 600#, 900#, 1500#, 2500#
Flange Face Style : Raise Face, Ring Type Joint
- Instrument (Outlet) : Size : 1/4", 3/8", 1/2" Standard
- Connection Style : NPT(F), NPT(M), ODT (Duble Ferrule)
- Vent Connection : 1/4" NPT(F) Standard,
3/8" NPT(F), 1/2" NPT(F)
- Mounting : Horizontal (standard) & Vertical
- Material - C.S. (ASTM A 105), S.S. (ASTM A182-F316), Monel M400, Duplex ASTM A182-F51 Hastelloy C-276, Valve can be supplied to meet the current revision of NACE MR-01-75 (Sour Gas service).
- Packing - PTFE, Grafoil
- All valves are 100% factory tested prior to shipment.
- Lubrication - Dye molly sulphide.
- Test conducted - Pneumatic Seat test is performed at 1/4 of working pressure.
 - Hydrostatic Shell Test is performed at 1.5 times the working pressure.
 - Optional test are available on request.

Applications

- Isolation service, Pressure measurement, Level measurement, Sampling.

Standard Feature

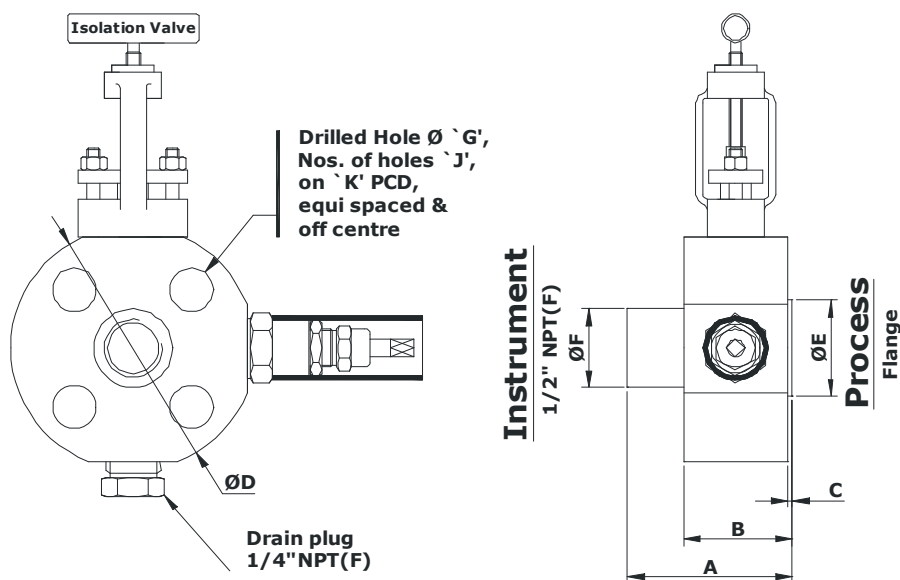
- 1/2-inch NPT threaded female outlet as standard to ANSI/ASME B1.20.1.
- Flange standard as per ANSI/ASME B 16.5

Bonnet Design

- Screwed Bonnet Design.
- Stem : Ground and thread rolled.
- Hard seat : - with non-rotating stem tip (with ST6).
 - with rotating stem tip-regulating & Soft seat .
- Bonnet Pusher : Silver plated for anti-galling freezing for increased stem cycle life.
- Dust Cap on bonnet pusher protects stem threads from external contamination.
- Packing and sealing are leak tight for easy operation.

PROCESS MONOFLANGE VALVE
- BLOCK & BLEED - PRODUCT CODE : CPMV-IB

Schematic Diagram



- Height of installed screwed bonnet needle valve : 73 open
- Height of installed O.S. & Y. type needle valve : 107 open
- Height of installed anti tamper needle valve : 70 open

Size	Class	Part name	A	B	C	ØD	ØE	ØF	ØG	J	ØK
1/2"	150#	CIMV-I - 8 - 1	60	40	1.59	88.90	35.05	28.58	15.75	4	60.45
3/4"		CIMV-I - 12 - 1	60	40	1.59	98.55	42.93	31.75	15.75	4	69.85
1"		CIMV-I - 16 - 1	60	40	1.59	107.95	50.80	31.75	15.75	4	79.25
1-1/2"		CIMV-I - 24 - 1	67	40	1.59	127.00	73.15	50.80	15.75	4	98.55
2"		CIMV-I - 32 - 1	60	40	1.59	152.40	91.95	50.80	19.05	4	120.65
1/2"	300#	CIMV-I - 8 - 2	60	40	1.59	95.25	35.05	31.75	15.75	4	66.55
3/4"		CIMV-I - 12 - 2	60	40	1.59	117.35	42.93	38.10	19.05	4	82.55
1"		CIMV-I - 16 - 2	60	40	1.59	123.95	50.80	38.10	19.05	4	88.90
1-1/2"		CIMV-I - 24 - 2	60	40	1.59	155.45	73.15	50.80	22.35	4	114.30
2"		CIMV-I - 32 - 2	60	40	1.59	165.10	91.95	50.80	19.05	8	127.00
1/2"	600#	CIMV-I - 8 - 4	60	45	6.35	95.25	35.05	31.75	15.75	4	66.55
3/4"		CIMV-I - 12 - 4	60	45	6.35	117.35	42.93	38.10	19.05	4	82.55
1"		CIMV-I - 16 - 4	60	45	6.35	123.95	50.80	38.10	19.05	4	88.90
1-1/2"		CIMV-I - 24 - 4	60	45	6.35	155.45	73.15	50.80	22.35	4	114.30
2"		CIMV-I - 32 - 4	60	48	6.35	165.10	91.95	50.80	19.05	8	127.00
1/2"	900/1500	CIMV-I - 8 - 6	60	45	6.35	120.65	35.05	31.75	22.35	4	82.55
3/4"		CIMV-I - 12 - 6	60	48	6.35	130.05	42.93	38.10	22.35	4	88.90
1"		CIMV-I - 16 - 6	67	51	6.35	149.35	50.80	38.10	25.40	4	101.60
1-1/2"		CIMV-I - 24 - 6	74	54	6.35	177.80	73.15	38.10	28.45	4	123.95
2"		CIMV-I - 32 - 6	67	61	6.35	215.90	91.95	50.80	25.4	8	165.10
1/2"	2500	CIMV-I - 8 - 16	60	54	6.35	133.35	35.05	31.75	22.35	4	88.90
3/4"		CIMV-I - 12 - 16	60	54	6.35	139.70	42.93	38.10	22.35	4	95.25
1"		CIMV-I - 16 - 16	67	57	6.35	158.75	50.80	38.10	25.40	4	107.95
1-1/2"		CIMV-I - 24 - 16	80	67	6.35	203.20	73.15	50.80	31.75	4	146.05
2"		CIMV-I - 32 - 16	80	73	6.35	234.95	91.95	50.80	28.45	8	171.45

INSTRUMENT MONOFLANGE VALVE**- DOUBLE BLOCK & BLEED - PRODUCT CODE : CIMV-IBI****Description**

- One-piece forged or bar stock body combines a compact design with strength and reduced potential leak paths compared to conventional designs.
- In this valve one primary isolation globe type needle valve, secondary isolation globe type needle valve & drain anti-tamper globe type needle valve are assembled & option drain port given with plug on the periphery of the flange. where the valve is directly mounted to the vessel or process pipe. Instruments may be directly mounted to the valve outlet or alternatively remotely mounted with gauge lines/impulse pipe work.

Features

- Size - 1/2" to 2" NB Flanges
- End connection - Process (Inlet) : Flange Size : 1/2", 3/4", 1", 1-1/2", 2"
Flange Class : 150#, 300#, 600#, 900#, 1500#, 2500#
Flange Face Style : Raise Face, Ring Type Joint
 - Instrument (Outlet) : Size : 1/4", 3/8", 1/2" Standard
- Connection Style : NPT(F), NPT(M), ODT (Duble Ferrule)
- Vent Connection : 1/4" NPT(F) Standard,
3/8" NPT(F), 1/2" NPT(F)
- Mounting : Horizontal (standard) & Vertical
- Material - C.S. (ASTM A 105), S.S. (ASTM A182-F316), Monel M400, Duplex ASTM A182-F51 Hastelloy C-276, Valve can be supplied to meet the current revision of NACE MR-01-75 (Sour Gas service).
- Packing - PTFE, Grafoil
- All valves are 100% factory tested prior to shipment.
- Lubrication - Dye molly sulphide.
- Test conducted - Pneumatic Seat test is performed at 1/4 of working pressure.
 - Hydrostatic Shell Test is performed at 1.5 times the working pressure.
 - Optional test are available on request.

Applications

- Isolation service, Pressure measurement, Level measurement, Sampling.

Standard Feature

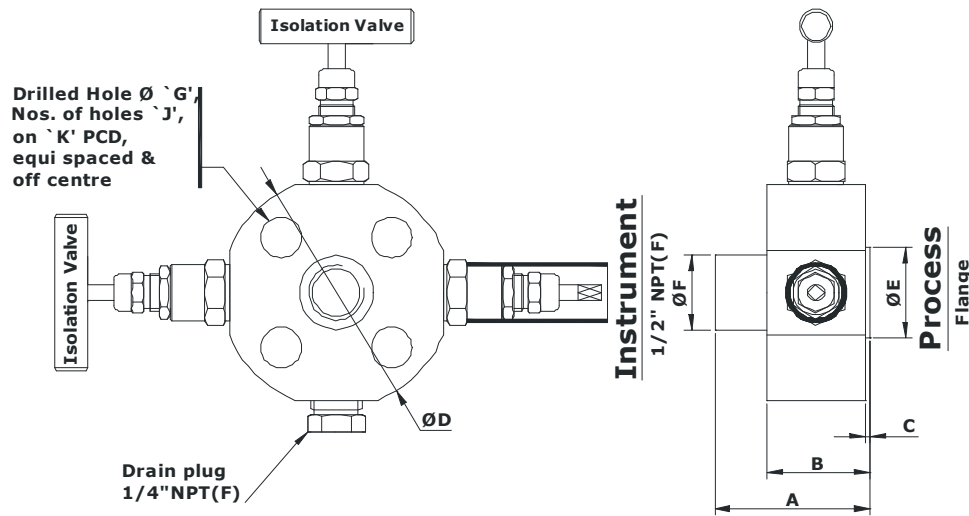
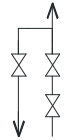
- 1/2-inch NPT threaded female outlet as standard to ANSI/ASME B1.20.1.
- Flange standard as per ANSI/ASME B 16.5

Bonnet Design

- Screwed Bonnet Design.
- Stem : Ground and thread rolled.
- Hard seat : - with non-rotating stem tip (with ST6).
- with rotating stem tip-regulating & Soft seat .
- Bonnet Pusher : Silver plated for anti-galling freezing for increased stem cycle life.
- Dust Cap on bonnet pusher protects stem threads from external contamination.
- Packing and sealing are leak tight for easy operation.

INSTRUMENT MONOFLANGE VALVE
- DOUBLE BLOCK & BLEED - PRODUCT CODE : CIMV-IBI

Schematic Diagram



- Height of installed screwed bonnet needle valve : 73 open
- Height of installed O.S. & Y. type needle valve : 107 open
- Height of installed anti tamper needle valve : 70 open

Size	Class	Part name	A	B	C	ØD	ØE	ØF	ØG	J	ØK
1/2"	150#	CIMV-I - 8 - 1	60	40	1.59	88.90	35.05	28.58	15.75	4	60.45
3/4"		CIMV-I - 12 - 1	60	40	1.59	98.55	42.93	31.75	15.75	4	69.85
1"		CIMV-I - 16 - 1	60	40	1.59	107.95	50.80	31.75	15.75	4	79.25
1-1/2"		CIMV-I - 24 - 1	67	40	1.59	127.00	73.15	50.80	15.75	4	98.55
2"		CIMV-I - 32 - 1	60	40	1.59	152.40	91.95	50.80	19.05	4	120.65
1/2"	300#	CIMV-I - 8 - 2	60	40	1.59	95.25	35.05	31.75	15.75	4	66.55
3/4"		CIMV-I - 12 - 2	60	40	1.59	117.35	42.93	38.10	19.05	4	82.55
1"		CIMV-I - 16 - 2	60	40	1.59	123.95	50.80	38.10	19.05	4	88.90
1-1/2"		CIMV-I - 24 - 2	60	40	1.59	155.45	73.15	50.80	22.35	4	114.30
2"		CIMV-I - 32 - 2	60	40	1.59	165.10	91.95	50.80	19.05	8	127.00
1/2"	600#	CIMV-I - 8 - 4	60	45	6.35	95.25	35.05	31.75	15.75	4	66.55
3/4"		CIMV-I - 12 - 4	60	45	6.35	117.35	42.93	38.10	19.05	4	82.55
1"		CIMV-I - 16 - 4	60	45	6.35	123.95	50.80	38.10	19.05	4	88.90
1-1/2"		CIMV-I - 24 - 4	60	45	6.35	155.45	73.15	50.80	22.35	4	114.30
2"		CIMV-I - 32 - 4	60	48	6.35	165.10	91.95	50.80	19.05	8	127.00
1/2"	900/1500	CIMV-I - 8 - 6	60	45	6.35	120.65	35.05	31.75	22.35	4	82.55
3/4"		CIMV-I - 12 - 6	60	48	6.35	130.05	42.93	38.10	22.35	4	88.90
1"		CIMV-I - 16 - 6	67	51	6.35	149.35	50.80	38.10	25.40	4	101.60
1-1/2"		CIMV-I - 24 - 6	74	54	6.35	177.80	73.15	38.10	28.45	4	123.95
2"		CIMV-I - 32 - 6	67	61	6.35	215.90	91.95	50.80	25.4	8	165.10
1/2"	2500	CIMV-I - 8 - 16	60	54	6.35	133.35	35.05	31.75	22.35	4	88.90
3/4"		CIMV-I - 12 - 16	60	54	6.35	139.70	42.93	38.10	22.35	4	95.25
1"		CIMV-I - 16 - 16	67	57	6.35	158.75	50.80	38.10	25.40	4	107.95
1-1/2"		CIMV-I - 24 - 16	80	67	6.35	203.20	73.15	50.80	31.75	4	146.05
2"		CIMV-I - 32 - 16	80	73	6.35	234.95	91.95	50.80	28.45	8	171.45

PROCESS MONOFLANGE VALVE**- DOUBLE BLOCK & BLEED - PRODUCT CODE : CPMV-IBI****Description**

- One-piece forged or bar stock body combines a compact design with strength and reduced potential leak paths compared to conventional designs.
- In this valve one primary isolation OS & Y type globe needle valve, secondary isolation globe type needle valve & drain anti-tamper globe type needle valve are assembled & option drain port given with plug on the periphery of the flange. where the valve is directly mounted to the vessel or process pipe. Instruments may be directly mounted to the valve outlet or alternatively remotely mounted with gauge lines/impulse pipe work.

Features

- Size - 1/2" to 2" NB Flanges
- End connection - Process (Inlet) : Flange Size : 1/2", 3/4", 1", 1-1/2", 2"
Flange Class : 150#, 300#, 600#, 900#, 1500#, 2500#
Flange Face Style : Raise Face, Ring Type Joint
 - Instrument (Outlet) : Size : 1/4", 3/8", 1/2" Standard
- Connection Style : NPT(F), NPT(M), ODT (Duble Ferrule)
- Vent Connection : 1/4" NPT(F) Standard,
3/8" NPT(F), 1/2" NPT(F)
- Mounting : Horizontal (standard) & Vertical
- Material - C.S. (ASTM A 105), S.S. (ASTM A182-F316), Monel M400, Duplex ASTM A182-F51 Hastelloy C-276, Valve can be supplied to meet the current revision of NACE MR-01-75 (Sour Gas service).
- Packing - PTFE, Grafoil
- All valves are 100% factory tested prior to shipment.
- Lubrication - Dye molly sulphide.
- Test conducted - Pneumatic Seat test is performed at 1/4 of working pressure.
 - Hydrostatic Shell Test is performed at 1.5 times the working pressure.
 - Optional test are available on request.

Applications

- Isolation service, Pressure measurement, Level measurement, Sampling.

Standard Feature

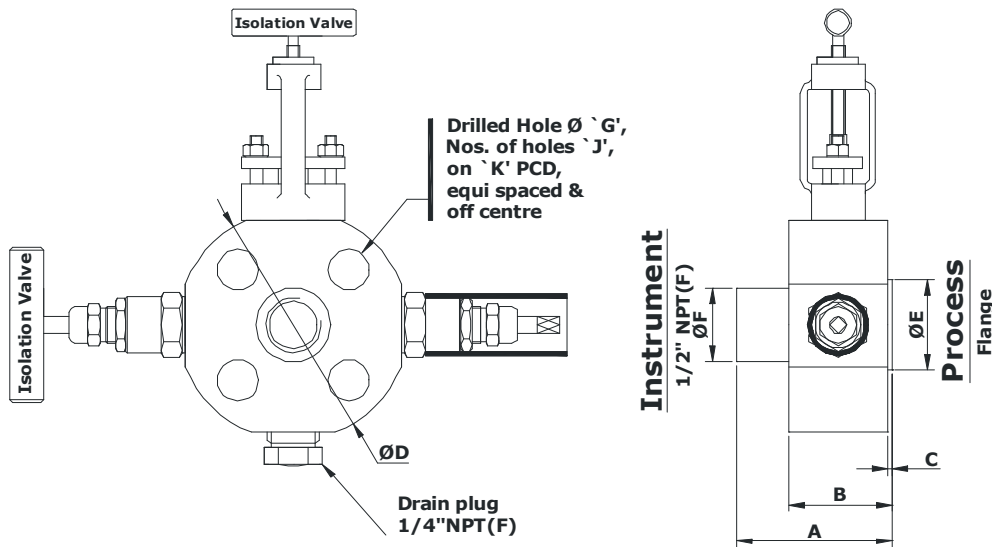
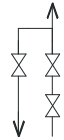
- 1/2-inch NPT threaded female outlet as standard to ANSI/ASME B1.20.1.
- Flange standard as per ANSI/ASME B 16.5

Bonnet Design

- Screwed Bonnet Design.
- Stem : Ground and thread rolled.
- Hard seat : - with non-rotating stem tip (with ST6).
- with rotating stem tip-regulating & Soft seat .
- Bonnet Pusher : Silver plated for anti-galling freezing for increased stem cycle life.
- Dust Cap on bonnet pusher protects stem threads from external contamination.
- Packing and sealing are leak tight for easy operation.

PROCESS MONOFLANGE VALVE
- DOUBLE BLOCK & BLEED - PRODUCT CODE : CPMV-IBI

Schematic Diagram



- Height of installed screwed bonnet needle valve : 73 open
- Height of installed O.S. & Y. type needle valve : 107 open
- Height of installed anti tamper needle valve : 70 open

Size	Class	Part name	A	B	C	ØD	ØE	ØF	ØG	J	ØK
1/2"	150#	CIMV-I - 8 - 1	60	40	1.59	88.90	35.05	28.58	15.75	4	60.45
3/4"		CIMV-I - 12 - 1	60	40	1.59	98.55	42.93	31.75	15.75	4	69.85
1"		CIMV-I - 16 - 1	60	40	1.59	107.95	50.80	31.75	15.75	4	79.25
1-1/2"		CIMV-I - 24 - 1	67	40	1.59	127.00	73.15	50.80	15.75	4	98.55
2"		CIMV-I - 32 - 1	60	40	1.59	152.40	91.95	50.80	19.05	4	120.65
1/2"	300#	CIMV-I - 8 - 2	60	40	1.59	95.25	35.05	31.75	15.75	4	66.55
3/4"		CIMV-I - 12 - 2	60	40	1.59	117.35	42.93	38.10	19.05	4	82.55
1"		CIMV-I - 16 - 2	60	40	1.59	123.95	50.80	38.10	19.05	4	88.90
1-1/2"		CIMV-I - 24 - 2	60	40	1.59	155.45	73.15	50.80	22.35	4	114.30
2"		CIMV-I - 32 - 2	60	40	1.59	165.10	91.95	50.80	19.05	8	127.00
1/2"	600#	CIMV-I - 8 - 4	60	45	6.35	95.25	35.05	31.75	15.75	4	66.55
3/4"		CIMV-I - 12 - 4	60	45	6.35	117.35	42.93	38.10	19.05	4	82.55
1"		CIMV-I - 16 - 4	60	45	6.35	123.95	50.80	38.10	19.05	4	88.90
1-1/2"		CIMV-I - 24 - 4	60	45	6.35	155.45	73.15	50.80	22.35	4	114.30
2"		CIMV-I - 32 - 4	60	48	6.35	165.10	91.95	50.80	19.05	8	127.00
1/2"	900/1500	CIMV-I - 8 - 6	60	45	6.35	120.65	35.05	31.75	22.35	4	82.55
3/4"		CIMV-I - 12 - 6	60	48	6.35	130.05	42.93	38.10	22.35	4	88.90
1"		CIMV-I - 16 - 6	67	51	6.35	149.35	50.80	38.10	25.40	4	101.60
1-1/2"		CIMV-I - 24 - 6	74	54	6.35	177.80	73.15	38.10	28.45	4	123.95
2"		CIMV-I - 32 - 6	67	61	6.35	215.90	91.95	50.80	25.4	8	165.10
1/2"	2500	CIMV-I - 8 - 16	60	54	6.35	133.35	35.05	31.75	22.35	4	88.90
3/4"		CIMV-I - 12 - 16	60	54	6.35	139.70	42.93	38.10	22.35	4	95.25
1"		CIMV-I - 16 - 16	67	57	6.35	158.75	50.80	38.10	25.40	4	107.95
1-1/2"		CIMV-I - 24 - 16	80	67	6.35	203.20	73.15	50.80	31.75	4	146.05
2"		CIMV-I - 32 - 16	80	73	6.35	234.95	91.95	50.80	28.45	8	171.45

B-TEK